

# \$622,700 - 241 Chelsea Court, Chestermere

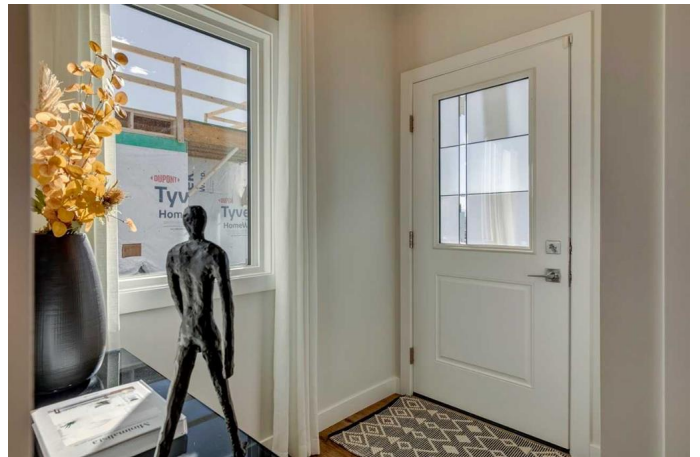
MLS® #A2216695

## \$622,700

3 Bedroom, 3.00 Bathroom, 1,853 sqft  
Residential on 0.08 Acres

Chelsea\_CH, Chestermere, Alberta

Discover the Hogan 4 â€” a stunning front garage duplex blending style and function. Built by a trusted builder with over 70 years of experience, this home showcases on-trend, designer-curated interior selections tailored for a home that feels personalized to you. This energy-efficient home is Built Green certified and includes triple-pane windows, a high-efficiency furnace, and a solar chase for a solar-ready setup. With blower door testing that can offer up to may be eligible for up to 25% mortgage insurance savings, plus an electric car charger rough-in, itâ€™s designed for sustainable, future-forward living. Featuring a full suite of smart home technology, this home includes a programmable thermostat, ring camera doorbell, smart front door lock, smart and motion-activated switchesâ€”all seamlessly controlled via an Amazon Alexa touchscreen hub. The gourmet kitchen features stainless steel appliances, a gas range, Silgranit sink, walk-through pantry, and sleek tile backsplash. Enjoy 9' basement ceilings, side entrance, and a spacious upper floor bonus room with vaulted ceiling. The primary bedroom boasts a W.I.C. and upgraded tiled ensuite shower. Modern finishes include paint-grade railing with iron spindles, LVP flooring throughout the main floor and wet areas, and an electric fireplace with a wall-to-wall tile face. Relax on the rear 9'-6"x11'-16" deck. Plus, your move will be stress-free with a concierge service provided by Sterling Homes Calgary that handles all



your moving essentialsâ€”even providing boxes! Photos are a representative.

Built in 2024

**Essential Information**

|                |                        |
|----------------|------------------------|
| MLS® #         | A2216695               |
| Price          | \$622,700              |
| Bedrooms       | 3                      |
| Bathrooms      | 3.00                   |
| Full Baths     | 2                      |
| Half Baths     | 1                      |
| Square Footage | 1,853                  |
| Acres          | 0.08                   |
| Year Built     | 2024                   |
| Type           | Residential            |
| Sub-Type       | Semi Detached          |
| Style          | 2 Storey, Side by Side |
| Status         | Active                 |

**Community Information**

|             |                   |
|-------------|-------------------|
| Address     | 241 Chelsea Court |
| Subdivision | Chelsea_CH        |
| City        | Chestermere       |
| County      | Chestermere       |
| Province    | Alberta           |
| Postal Code | T1X2Z4            |

**Amenities**

|                |                        |
|----------------|------------------------|
| Amenities      | None                   |
| Parking Spaces | 4                      |
| Parking        | Double Garage Attached |
| # of Garages   | 2                      |

**Interior**

|                   |   |
|-------------------|---|
| Interior Features | French Door, Kitchen Island, Open Floorplan, Pantry, Separate Entrance, Tankless Hot Water, Vaulted Ceiling(s), Walk-In Closet(s) |
| Appliances        | Dishwasher, Gas Range, Microwave, Range Hood, Refrigerator, Tankless Water Heater   |

|                 |                         |
|-----------------|-------------------------|
| Heating         | Forced Air, Natural Gas |
| Cooling         | None                    |
| Fireplace       | Yes                     |
| # of Fireplaces | 1                       |
| Fireplaces      | Decorative, Electric    |
| Has Basement    | Yes                     |
| Basement        | Full, Unfinished        |

## Exterior

|                   |                                 |
|-------------------|---------------------------------|
| Exterior Features | Lighting                        |
| Lot Description   | Back Yard                       |
| Roof              | Asphalt Shingle                 |
| Construction      | Stone, Vinyl Siding, Wood Frame |
| Foundation        | Poured Concrete                 |

## Additional Information

|                |               |
|----------------|---------------|
| Date Listed    | May 1st, 2025 |
| Days on Market | 21            |
| Zoning         | TBD           |
| HOA Fees       | 200           |
| HOA Fees Freq. | ANN           |

## Listing Details

|                |                    |
|----------------|--------------------|
| Listing Office | Bode Platform Inc. |
|----------------|--------------------|

Data is supplied by Pillar 9â„¢ MLS® System. Pillar 9â„¢ is the owner of the copyright in its MLS® System. Data is deemed reliable but is not guaranteed accurate by Pillar 9â„¢. The trademarks MLS®, Multiple Listing Service® and the associated logos are owned by The Canadian Real Estate Association (CREA) and identify the quality of services provided by real estate professionals who are members of CREA. Used under license.