

\$409,900 - 533 18 Street S, Lethbridge

MLS® #A2217873

\$409,900

5 Bedroom, 2.00 Bathroom, 1,149 sqft

Residential on 0.16 Acres

Victoria Park, Lethbridge, Alberta

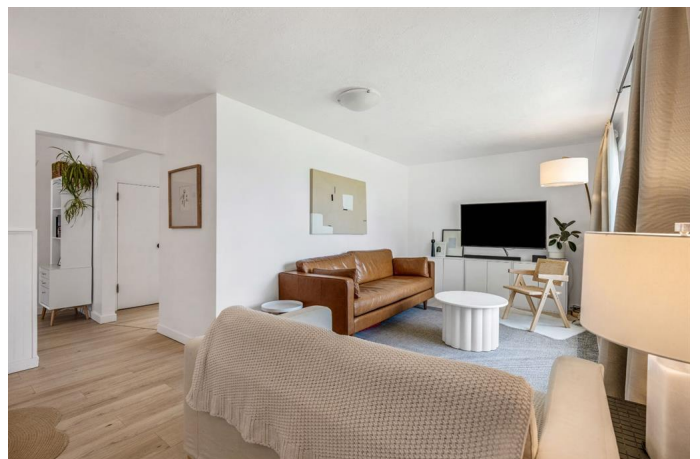
SUPER CUTE! And ready for you to move in! This property has a great floor plan with 3 bedrooms on the main floor! Updates include a new kitchen with LOTS of classy cabinets, quartz countertops, lots of natural lighting, all new appliances, pot lighting, windows and flooring! The bathroom had a complete make-over as well from top to bottom! You'll love the fresh and clean look throughout this home: fresh paint and new lighting! There are 3 spacious bedrooms on the main with LARGE windows! The lower level has had a makeover as well, updated bathroom, painted throughout, new flooring & lighting. The furnace & electrical were updated. The laundry room has storage & a convenient sink good for cleaning up after crafts of any kind! There are 2 other bedrooms and a flex room/potential 3rd bedroom and a large family/play room for quality time together! The back yard is family friendly with BBQ & patio area, play space for children, a garden area a new fence and LOTS of parking (room for a serious garage later!). Plenty of room for a family to grow and entertain! Call your favourite REALTOR for a showing!

Built in 1954

Essential Information

MLS® # A2217873

Price \$409,900



Bedrooms	5
Bathrooms	2.00
Full Baths	2
Square Footage	1,149
Acres	0.16
Year Built	1954
Type	Residential
Sub-Type	Detached
Style	Bungalow
Status	Active

Community Information

Address	533 18 Street S
Subdivision	Victoria Park
City	Lethbridge
County	Lethbridge
Province	Alberta
Postal Code	T1J 3E6

Amenities

Parking Spaces	4
Parking	Off Street, Single Garage Attached
# of Garages	1

Interior

Interior Features	Quartz Counters, Separate Entrance, Storage
Appliances	Microwave Hood Fan, Refrigerator, Stove(s)
Heating	Forced Air
Cooling	None
Has Basement	Yes
Basement	Finished, Full

Exterior

Exterior Features	Private Yard
Lot Description	Back Lane, Landscaped
Roof	Asphalt Shingle
Construction	Wood Frame
Foundation	Poured Concrete

Additional Information

Date Listed	May 6th, 2025
Days on Market	4
Zoning	R-L

Listing Details

Listing Office	SUTTON GROUP - LETHBRIDGE
----------------	---------------------------

Data is supplied by Pillar 9â„¢ MLS® System. Pillar 9â„¢ is the owner of the copyright in its MLS® System. Data is deemed reliable but is not guaranteed accurate by Pillar 9â„¢. The trademarks MLS®, Multiple Listing Service® and the associated logos are owned by The Canadian Real Estate Association (CREA) and identify the quality of services provided by real estate professionals who are members of CREA. Used under license.