

\$329,900 - 1502, 3500 Varsity Drive Nw, Calgary

MLS® #A2218518

\$329,900

2 Bedroom, 1.00 Bathroom, 847 sqft

Residential on 0.00 Acres

Varsity, Calgary, Alberta

"" OPEN HOUSE: MONDAY, MAY 19,
10:00AM - 12:00 PM "" Prime location two
bedroom, ground level with large private patio.
Numerous extras and upgrade. Granite
countertops. Hardwood flooring, wood burning
fireplace, central air conditioning, fixtures.
Parking stall plus visitor parking. Prime
location in Varsity minutes to U of C,
Brentwood and Market mall. 7-8 minute walk
to Brentwood LRT station

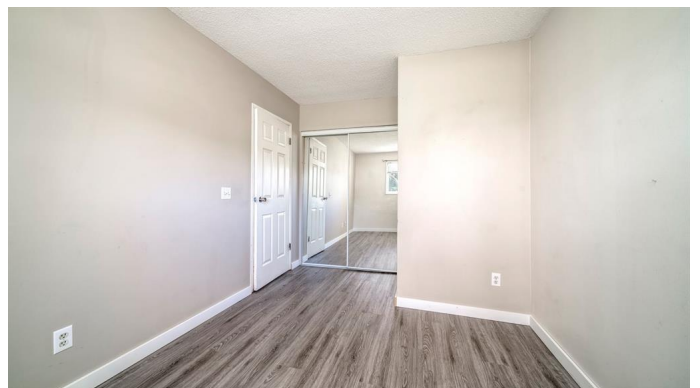
Built in 1976

Essential Information

MLS® #	A2218518
Price	\$329,900
Bedrooms	2
Bathrooms	1.00
Full Baths	1
Square Footage	847
Acres	0.00
Year Built	1976
Type	Residential
Sub-Type	Row/Townhouse
Style	Bungalow
Status	Active

Community Information

Address	1502, 3500 Varsity Drive Nw
Subdivision	Varsity



City	Calgary
County	Calgary
Province	Alberta
Postal Code	T2L 1Y3

Amenities

Amenities	Park
Parking Spaces	1
Parking	Stall

Interior

Interior Features	Granite Counters, Open Floorplan
Appliances	Central Air Conditioner, Dishwasher, Electric Stove, Microwave Hood Fan, Refrigerator, Washer/Dryer, Window Coverings
Heating	Forced Air
Cooling	Central Air
Fireplace	Yes
# of Fireplaces	1
Fireplaces	Wood Burning
Basement	None

Exterior

Exterior Features	Courtyard
Lot Description	Backs on to Park/Green Space, Landscaped
Roof	Tar/Gravel
Construction	Stucco, Wood Frame
Foundation	Slab

Additional Information

Date Listed	May 7th, 2025
Days on Market	11
Zoning	M-C1

Listing Details

Listing Office	Royal LePage Solutions
----------------	------------------------

Data is supplied by Pillar 9â„¢ MLSÂ® System. Pillar 9â„¢ is the owner of the copyright in its MLSÂ® System. Data is deemed reliable but is not guaranteed accurate by Pillar 9â„¢. The trademarks MLSÂ®, Multiple Listing ServiceÂ® and the associated logos are owned by The Canadian Real Estate Association (CREA) and identify the quality of services provided by real estate professionals who are members of CREA. Used under license.