

# \$1,799,000 - 24073 Burma Road, Rural Rocky View County

---

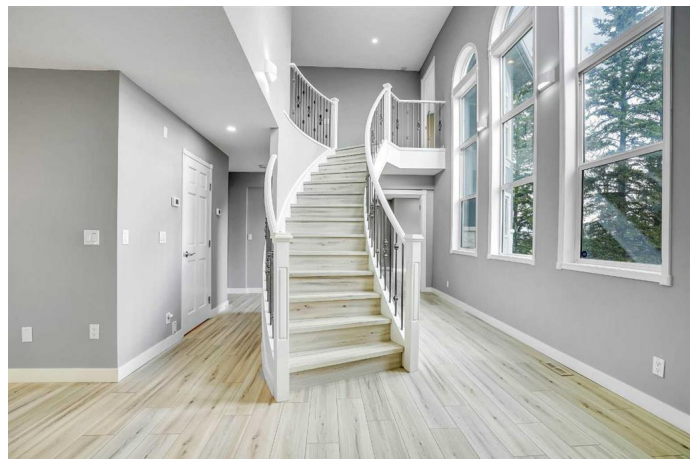
MLS® #A2221838

**\$1,799,000**

8 Bedroom, 6.00 Bathroom, 3,072 sqft  
Residential on 3.95 Acres

NONE, Rural Rocky View County, Alberta

Experience the perfect blend of country serenity and city convenience with this beautifully updated home on 3.95 acres in the BEARSPAW.... area of Rocky View County. Enjoy the view of the Northern lights from the front yard of your house whenever it occurs.â€” The property is located just 400 meters away from the City of Calgary limits. This spacious and fully renovated property offers modern features, versatile living space, and unbeatable location close to the YMCA in Rocky Ridge. Thoughtfully renovated from top to bottom, this home underwent a full remodel in 2023, followed by a new hot water tank in 2024, and most recently in 2025, fresh interior and exterior paint along with new downspouts were addedâ€”making this home truly move-in ready. Inside, you'll find a bright and stylish kitchen with stainless steel appliances, a main floor primary bedroom with a luxurious 5-piece ensuite, and a private office ideal for working from home. The upper level offers three additional bedrooms, each with their own ensuite (two 4-piece and one 5-piece), providing comfort and privacy for every family member. The finished basement expands the living space even further with four more bedrooms and a 3-piece bath, perfect for guests, extended family, or flexible use. Outside, enjoy your very own greenhouse, a handy storage shed, and plenty of open space for gardening, play, or relaxing in nature.



Whether you're looking for a peaceful retreat, a family estate, or multigenerational living, this property checks every box. Don't miss this rare opportunity to own a fully renovated acreage so close to Calgaryâ€™s space, style, and convenience all in one package!

Built in 2004

### Essential Information

|                |                                  |
|----------------|----------------------------------|
| MLS® #         | A2221838                         |
| Price          | \$1,799,000                      |
| Bedrooms       | 8                                |
| Bathrooms      | 6.00                             |
| Full Baths     | 5                                |
| Half Baths     | 1                                |
| Square Footage | 3,072                            |
| Acres          | 3.95                             |
| Year Built     | 2004                             |
| Type           | Residential                      |
| Sub-Type       | Detached                         |
| Style          | 2 Storey, Acreage with Residence |
| Status         | Active                           |

### Community Information

|             |                         |
|-------------|-------------------------|
| Address     | 24073 Burma Road        |
| Subdivision | NONE                    |
| City        | Rural Rocky View County |
| County      | Rocky View County       |
| Province    | Alberta                 |
| Postal Code | T3R1E3                  |

### Amenities

|              |                        |
|--------------|------------------------|
| Parking      | Double Garage Attached |
| # of Garages | 2                      |

### Interior

|                   |  |
|-------------------|--|
| Interior Features | Breakfast Bar, Closet Organizers, Double Vanity, Kitchen Island, Low Flow Plumbing Fixtures, Quartz Counters, Storage, Walk-In Closet(s) |
|-------------------|--|

|                 |   |
|-----------------|---|
| Appliances      | Built-In Oven, Dishwasher, Gas Cooktop, Microwave, Range Hood, Refrigerator, Washer/Dryer |
| Heating         | Forced Air  |
| Cooling         | None  |
| Fireplace       | Yes   |
| # of Fireplaces | 1   |
| Fireplaces      | Electric  |
| Has Basement    | Yes   |
| Basement        | Finished, Full  |

## Exterior

|                   |  |
|-------------------|--|
| Exterior Features | Courtyard, Garden, Private Entrance, Storage |
| Lot Description   | Few Trees, Rectangular Lot                   |
| Roof              | Asphalt Shingle                              |
| Construction      | Stone, Stucco, Wood Frame                    |
| Foundation        | Poured Concrete                              |

## Additional Information

|                |                |
|----------------|----------------|
| Date Listed    | May 15th, 2025 |
| Days on Market | 20             |
| Zoning         | CR             |

## Listing Details

|                |                    |
|----------------|--------------------|
| Listing Office | Royal LePage METRO |
|----------------|--------------------|

Data is supplied by Pillar 9â„¢ MLS® System. Pillar 9â„¢ is the owner of the copyright in its MLS® System. Data is deemed reliable but is not guaranteed accurate by Pillar 9â„¢. The trademarks MLS®, Multiple Listing Service® and the associated logos are owned by The Canadian Real Estate Association (CREA) and identify the quality of services provided by real estate professionals who are members of CREA. Used under license.