

\$1,198,000 - 11023 Willowfern Drive Se, Calgary

MLS® #A2226028

\$1,198,000

4 Bedroom, 4.00 Bathroom, 2,108 sqft

Residential on 0.26 Acres

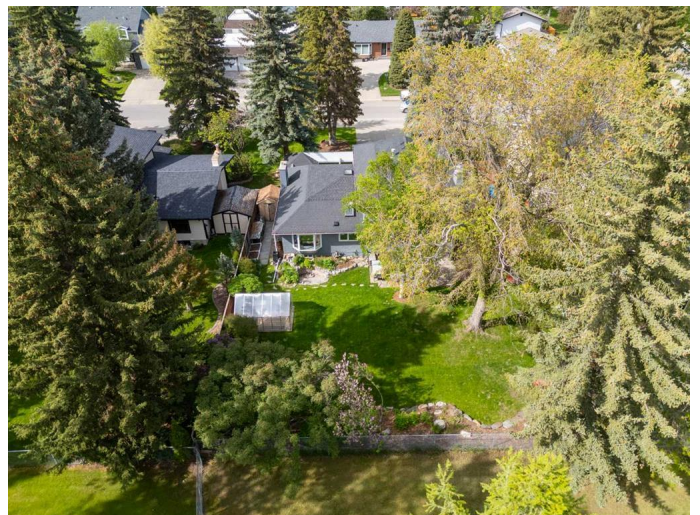
Willow Park, Calgary, Alberta

3,083 TOTAL SQ.FT. | 4-BED | 3.5-BATH | SOUTH-FACING 11,000+ SQ.FT. LOT | BACKING GREENSPACE | GOLF COURSE VIEWS | An opportunity rarely found in Willow Park. Sitting on one of the community's largest lots (over ¼ acre) and backing directly onto green space with golf course views, this property offers exceptional potential for a full renovation or an entirely new build. The south-facing yard is deep and private, with mature trees, RV parking, and room to create an extraordinary outdoor living space or estate-sized home. The existing two-storey offers 3,000+ sq.ft. of developed space, with four bedrooms, 3.5 bathrooms, and multiple living areas. It's move-in ready or rentable while you finalize your plans. Properties of this size and location rarely come to market—steps from Willow Park Golf & Country Club and minutes to schools, shopping, and major routes. Bring your vision and make this one of Willow Park's premier addresses.

Built in 1967

Essential Information

| | |
|------------|-------------|
| MLS® # | A2226028 |
| Price | \$1,198,000 |
| Bedrooms | 4 |
| Bathrooms | 4.00 |
| Full Baths | 3 |



| | |
|----------------|----------------|
| Half Baths | 1 |
| Square Footage | 2,108 |
| Acres | 0.26 |
| Year Built | 1967 |
| Type | Residential |
| Sub-Type | Detached |
| Style | 2 Storey Split |
| Status | Active |

Community Information

| | |
|-------------|---------------------------|
| Address | 11023 Willowfern Drive Se |
| Subdivision | Willow Park |
| City | Calgary |
| County | Calgary |
| Province | Alberta |
| Postal Code | T2J 1R6 |

Amenities

| | |
|----------------|------------------------|
| Parking Spaces | 6 |
| Parking | Double Garage Attached |
| # of Garages | 2 |

Interior

| | |
|-------------------|---|
| Interior Features | Closet Organizers, No Animal Home, No Smoking Home, Pantry, Storage, Granite Counters |
| Appliances | Dishwasher, Dryer, Gas Range, Microwave, Refrigerator, Washer, Washer/Dryer Stacked |
| Heating | Forced Air |
| Cooling | None |
| Fireplace | Yes |
| # of Fireplaces | 2 |
| Fireplaces | Wood Burning |
| Has Basement | Yes |
| Basement | Finished, Full |

Exterior

| | |
|-------------------|---|
| Exterior Features | Garden |
| Lot Description | Back Yard, Front Yard, Lawn, Backs on to Park/Green Space, Close to Clubhouse, Garden |

| | |
|--------------|---------------------------|
| Roof | Asphalt Shingle |
| Construction | Brick, Stucco, Wood Frame |
| Foundation | Poured Concrete |

Additional Information

| | |
|----------------|----------------|
| Date Listed | May 29th, 2025 |
| Days on Market | 68 |
| Zoning | R-CG |

Listing Details

| | |
|----------------|-------------|
| Listing Office | Real Broker |
|----------------|-------------|

Data is supplied by Pillar 9â„¢ MLS® System. Pillar 9â„¢ is the owner of the copyright in its MLS® System. Data is deemed reliable but is not guaranteed accurate by Pillar 9â„¢. The trademarks MLS®, Multiple Listing Service® and the associated logos are owned by The Canadian Real Estate Association (CREA) and identify the quality of services provided by real estate professionals who are members of CREA. Used under license.