

# \$579,900 - 1021, 5151 WINDERMERE BV SW, Edmonton

MLS® #E4294190

**\$579,900**

2 Bedroom, 2 Bathroom, 1,390 sqft

LUXURY TWO BEDROOM PLUS DEN LUXURY CO

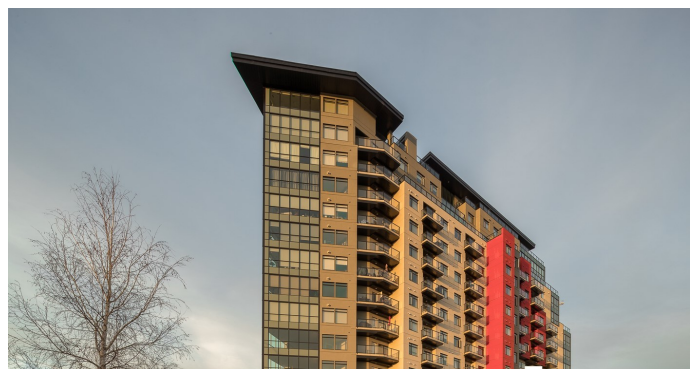
Ambleside, Edmonton, Alberta

PANORAMIC SOUTH, WEST, AND NORTH VIEW - 10TH Floor Luxury Villa Corner Unit with PRIVATE ELEVATOR. TWO Bedroom PLUS Den. There are TWO Balconies on either side of the suite. Parking: Two Titled stalls; Steps away from the private elevator. Walking distance to extensive trail system and shopping. Very easy access to the Henday Freeway.

Built in 2014

## Essential Information

MLS® #	E4294190
Price	\$579,900
Bedrooms	2
Bathrooms	2
Square Footage	1,390
Year Built	2014
Type	LUXURY TWO BEDROOM PLUS DEN
Status	Active



## Community Information

Address	1021, 5151 WINDERMERE BV SW
Subdivision	Ambleside
City	Edmonton
Province	Alberta
Postal Code	T6W 2K4

## Amenities

Features	TWO UNDERGROUND HEATED PARKING STALLS
----------	---------------------------------------